

INSTALLING NEW INTELLITRAC SOFTWARE FOR THE G4

Please see important NOTE at the end of this quick guide

First start at your computer:

1. If you haven't used this USB in G4 previously it is a good idea to do a quick format. REMEMBER this will erase everything on that USB so make sure you don't have anything valuable on the USB. Highlight the USB directory, do a right click and select format – check off Quick Format. Select Yes.
2. Download the file from dropbox (email link shared with you), saving it to the chosen USB (let's say that is drive E).
3. Go to the USB (drive E) and **perform an extract** by highlighting the zipped file from Dropbox, doing a right click on your mouse and choosing EXTRACT ALL. A wizard will appear.

Extract Compressed (Zipped) Folders

Select a Destination and Extract Files

Files will be extracted to this folder:

G:\Trac_3.19.115.1614

Browse...

☒ Show extracted files when complete

Extract

Cancel

Click on extract

Next you will see this confirmation of where to extract to:

Extract Compressed (Zipped) Folders

Select a Destination and Extract Files

Files will be extracted to this folder:

G:\Trac_3.19.115.1614

Browse...

☒ Show extracted files when complete

The wizard wants to make a new directory – do NOT allow this, go into the path and back it to just the root,

Files will be extracted to this folder:

G:\

☒ Show extracted files when complete

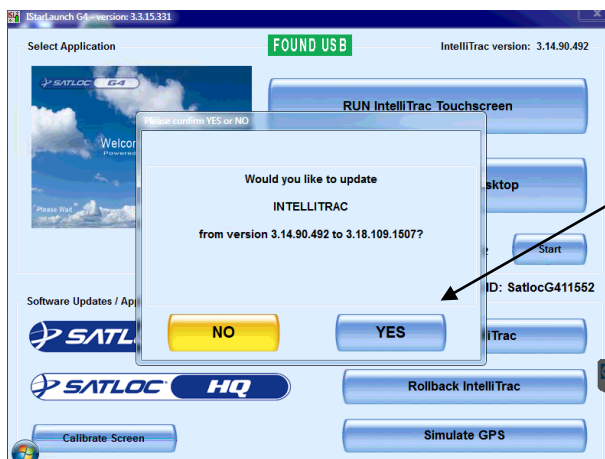
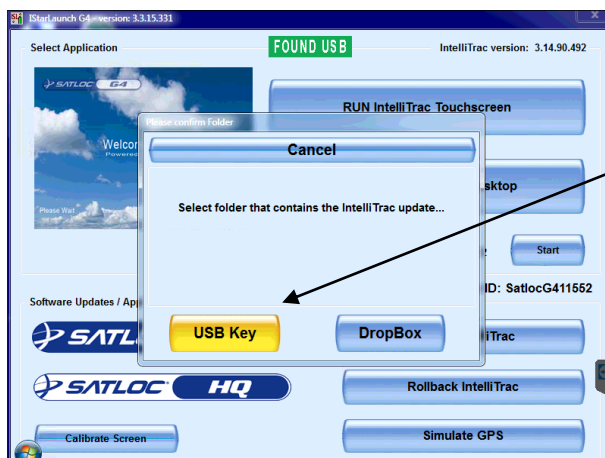
4. **Safely remove the USB** by left clicking correct location on the SAFELY REMOVE HARDWARE icon at the bottom of your computer's task bar.
5. Take the USB to the aircraft.

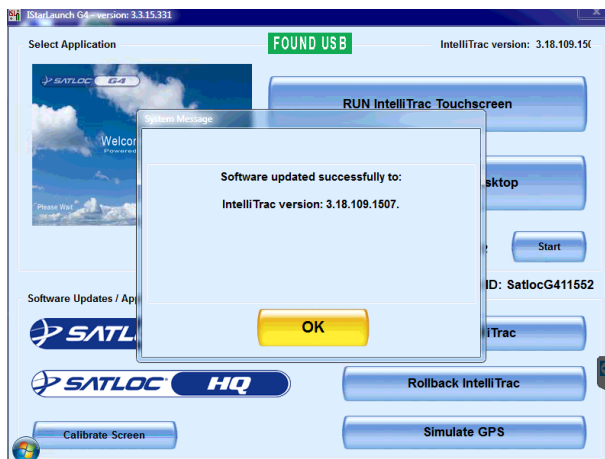
Now at the aircraft:

6. Power on the G4. Press stop at the launch screen. Then insert the USB. Look for FOUND USB to appear in a green box at center of screen. The G4 is then ready to look to the plugged in USB.

(Note: Your settings such as lightbar, screen etc will remain as they were prior to the update.)

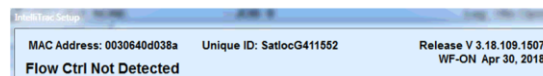
7. At the main IStarLaunch G4, choose **“Update IntelliTrac”**





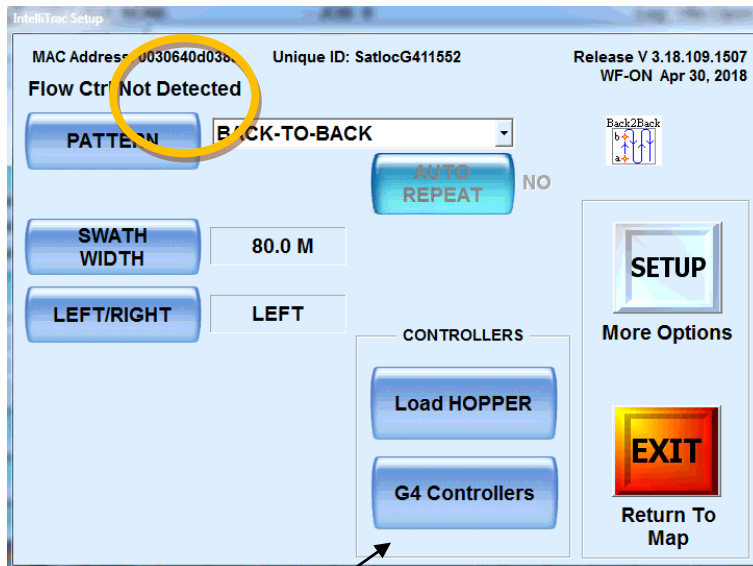
8. After the update, we suggest you power down, remove the USB from the hub and then boot up again.
9. Boot up as usual, choose Launch Intellitrac and once the G4 opening screen comes up, you should see the new software version at the top right of your initial Setup screen.

Confirm it is the newest version.



Before using the software we recommend a double check on all of your pilot settings and ensuring your flow control is detected.

If your flow control is not detected, make sure your model is in use. Legacy or IF2? To check:

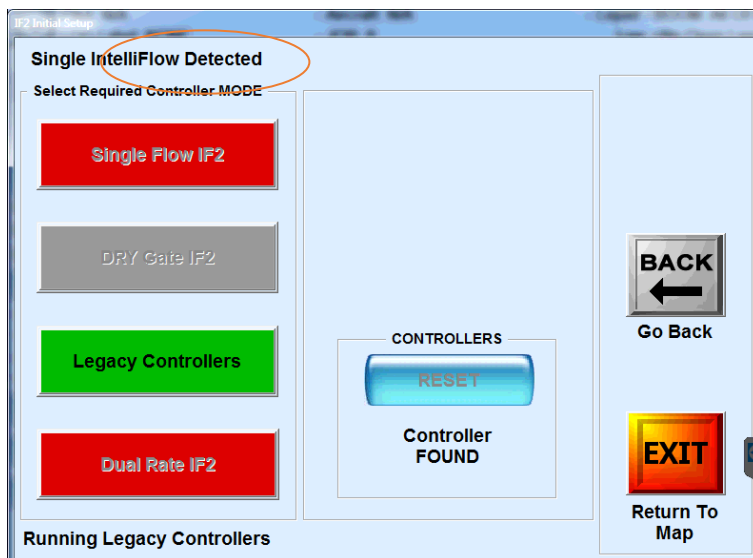


10. Go to G4 Controllers,

If your aircraft is installed with Legacy Intelliflow Controllers (PN: 806-1020-000), Please choose “**Legacy Controllers**”; if it is an IF2 choose Single Flow IF2.

The screen should states” Single Intelliflow Detected” and “Controller FOUND”.

If Controller is not FOUND, press “RESET”

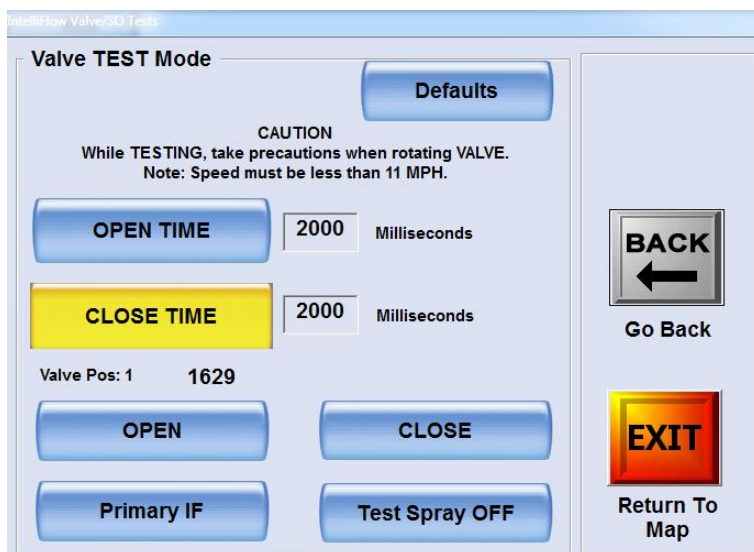


11. Check the operation of flow control valve

- a. Go to Setup→Flow Control Setup→Flow Control Advanced Setup, press **“Test Valve”**.

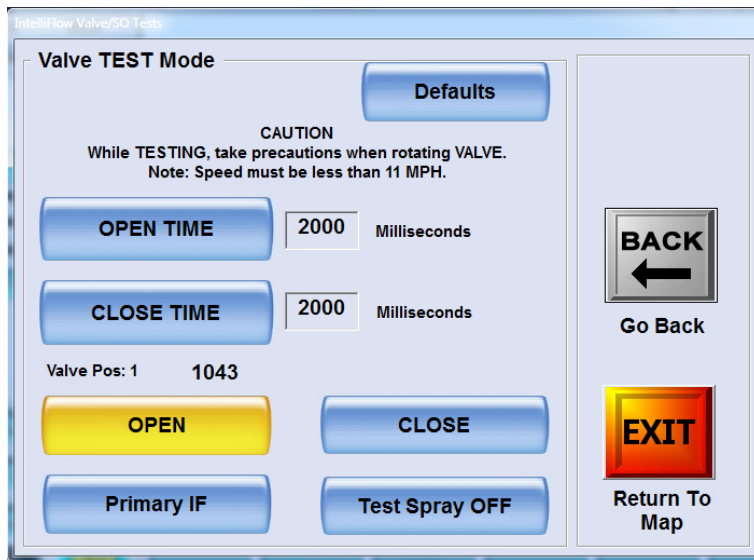


- b. Set the open time from 200 to 2000, close time from 200 to 2000.

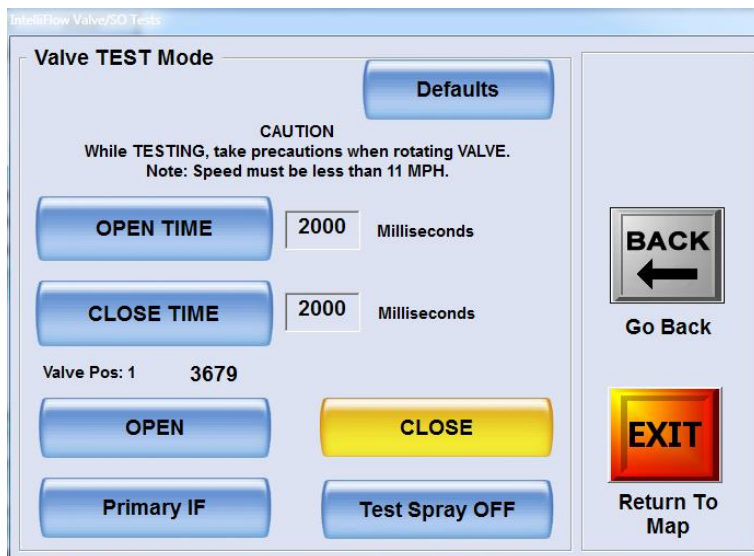


- c. Press “Open”, the valve pos should fully open – your number will vary depending on the controller.

Controller Type	Open – Approximately	Close - Approximately
Legacy Controller	~ 1100	~ 3600
IF2	~ 3060	~ 6100



- d. Press “close”, the valve pos should fully close from around “1000” to around “3xxx”.



- e. Turn your intelliflow controller valve switch from “Normal” to “Bypass”.

The valve pos should fully open- **reference chart above**.

- f. Set the open time back from 2000 to 200, close time from 2000 to 200.

IntelliFlow Valve/SD Tests

Valve TEST Mode

Defaults

CAUTION
While TESTING, take precautions when rotating VALVE.
Note: Speed must be less than 11 MPH.

OPEN TIME Milliseconds

CLOSE TIME Milliseconds

Valve Pos: 1 **1044**

OPEN **CLOSE**

Primary IF **Test Spray OFF**

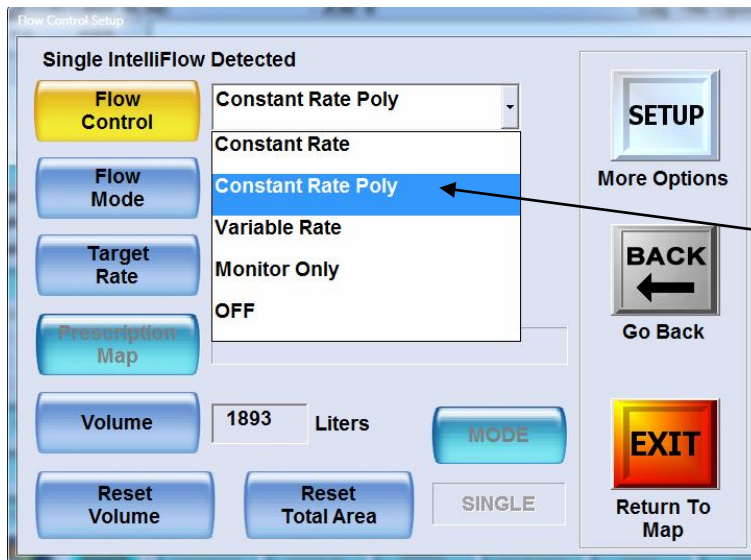
BACK
Go Back

EXIT
Return To Map

- g. Return your intelliflow controller valve switch from "Bypass" to "Normal".

12. Procedure for AUTOBOOM setup

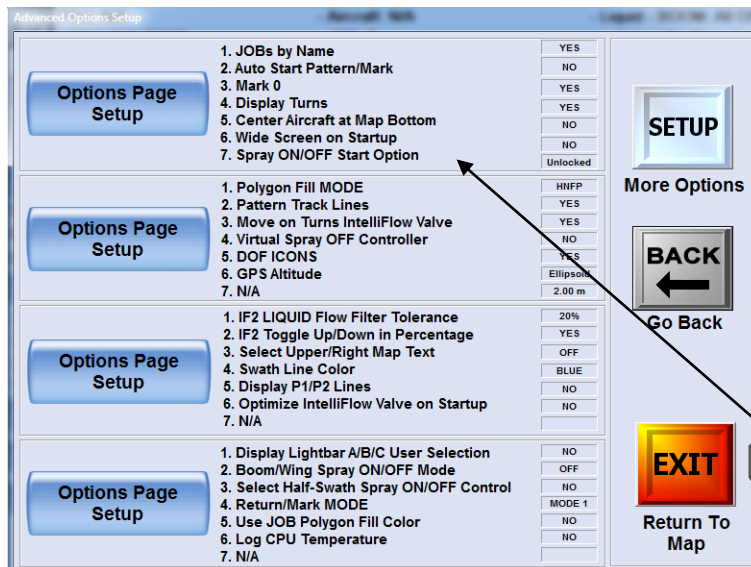
- a. Go to Setup→Flow Control Setup, please control “**Constant Rate Poly**” is selected in “Flow Control”.



NEW Feature

In this new software **CONSTANT RATE POLY** will stay in your settings after each shutdown.

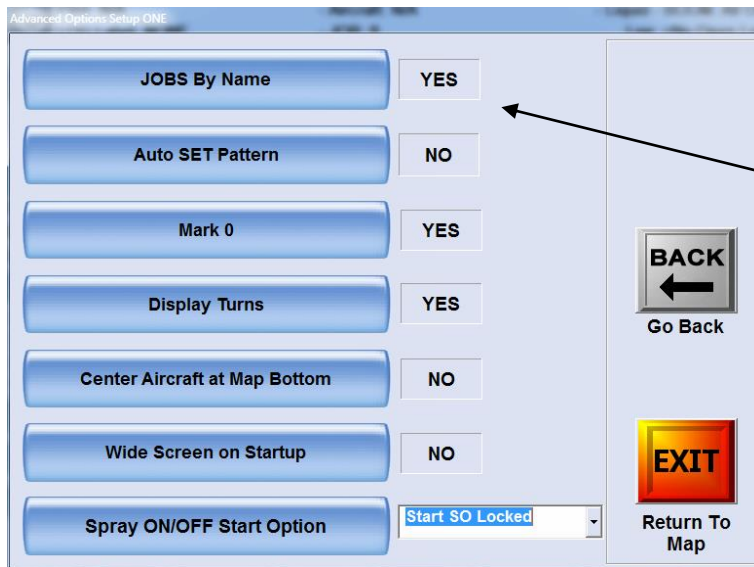
- b. Go to Setup→Setup→Setup→Setup→Setup→, Until you get into the “Advance Options Setup”.



NEW Feature

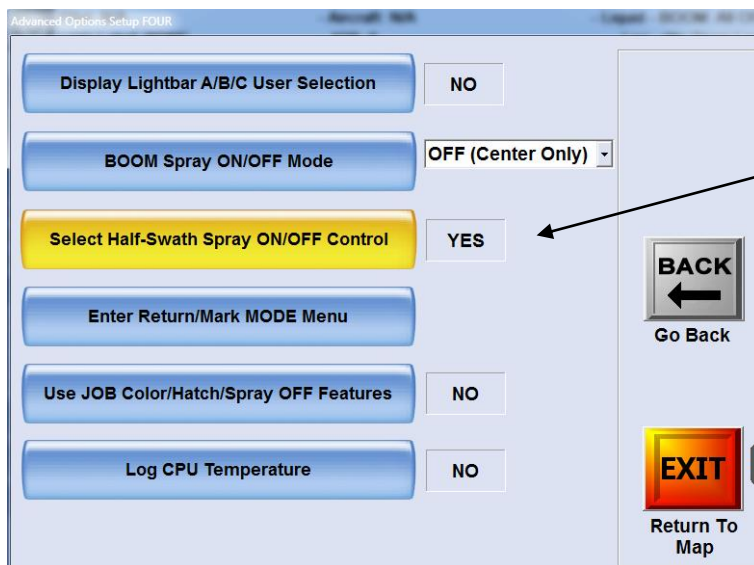
By this option the PILOT will not have to manually release his fan break at the exact entrance to his job. He can release it well in advance and the system will not spray.

- c. In the “Advanced Options Setup ONE”, set “Spray ON/OFF Start Option” to “**Start SO Locked**”.



Also a good idea to have Jobs by Name set to YES for those times you get a job that is Alpha Numeric

- d. In the “Advanced Options Setup FOUR”, set “Select Half-Swath Spray ON/OFF Control” to “Yes”.



This features allows a pilot to fly over his poly without the spray coming on.

13. Press “Exit” to Return to Map.

14. Continue to work within the program or do a proper shutdown, CLEAR CLEAR Exit to Windows, then shut windows done as usual.

Note: This reference sheet does not detail all the Forestry settings you need to install in your Satloc for the forestry program (calibration codes, UNITS, on/off etc). The purpose of this sheet is to assist with the upload of new software and highlighting new features.

