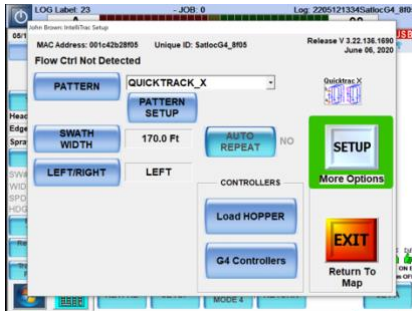


G4 & Bantam WAAS PRN Setting Change

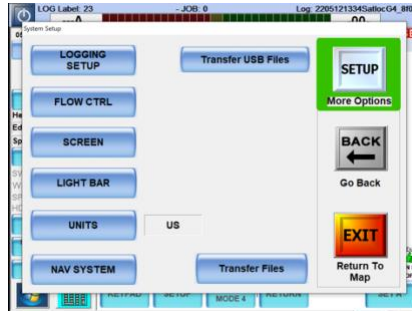
In May 2022 the WAAS program will enter a new geostationary satellite into service. This new satellite, PRN 135, will replace the current WAAS PRN 138 satellite. PRN 135 will begin WAAS transmissions on April 26th, 2022. The new satellite is the Galaxy 30 located at 125 degrees west longitude. PRN 138 will cease WAAS transmissions on May 17th, 2022

Below are the steps to change WAAS PRN for the G4

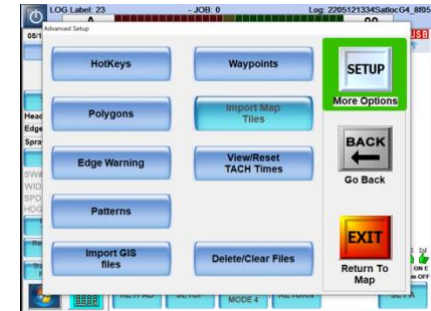
SETUP



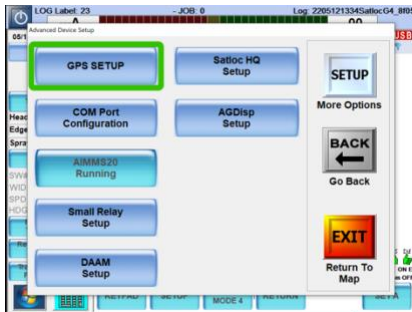
SETUP



SETUP



GPS SETUP



GPS ADVANCED SETUP



WAAS PRN (AUTO OR PRN 135)



Below are the steps to change WAAS PRN for the Bantam

